

MODEL 8P 1-SPEED WINCH

MANUFACTURED AFTER JULY 1, 1985

MAINTENANCE & SERVICE INFORMATION

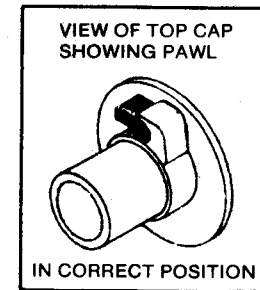
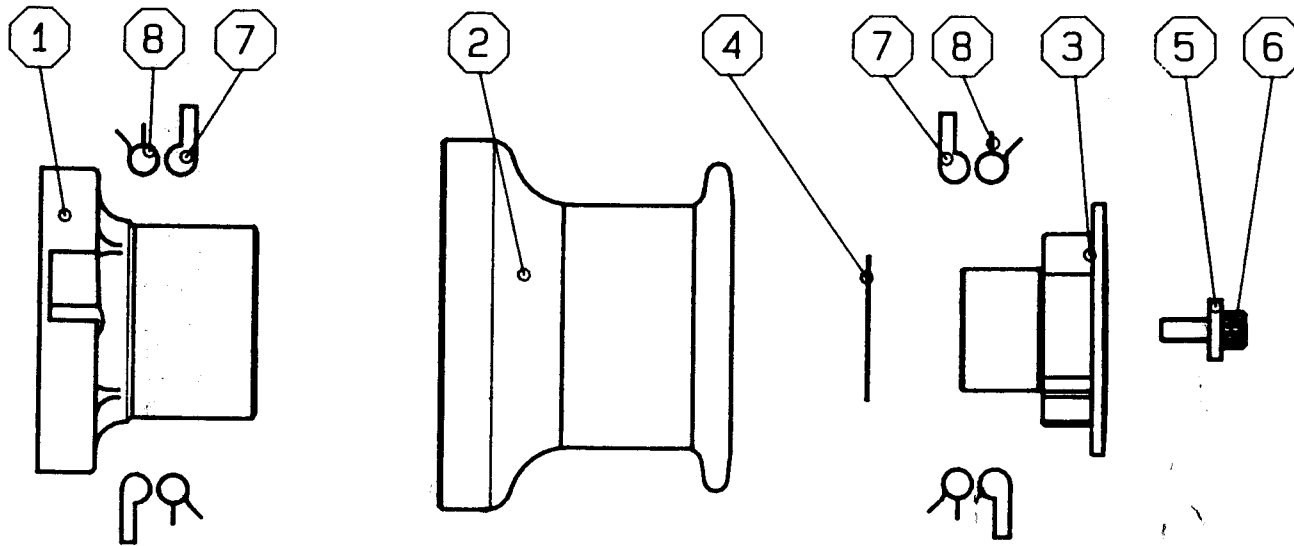
Quality Winches and Fine Yacht Gear

BARIENT

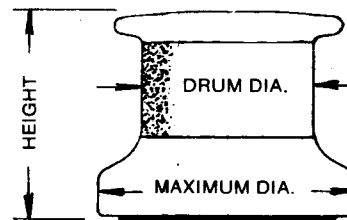
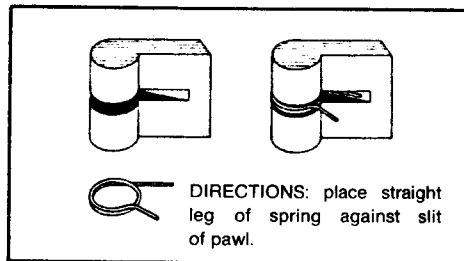
BARIENT INC., 3641 HAVEN AVENUE,
MENLO PARK, C A. 94025, U.S.A.
(415) 367 9924, TELEX NO. 345559

MAINTENANCE & SERVICE INFORMATION

MODEL 8P 1-SPEED WINCH

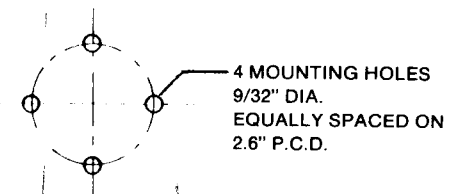


PLACEMENT OF SPRING AGAINST PAWL



MODEL 8P

	1st	2nd
GEAR RATIO	1:1	—
POWER RATIO	7.9:1	—
DRUM DIA.	63mm	2 ¹ / ₂ "
MAXIMUM DIA.	93mm	3 ¹¹ / ₁₆ "
HEIGHT	81mm	3 ³ / ₁₆ "



MOUNTING INSTRUCTIONS

1. Using a 3/16" Allen key, remove the capscrew (6) from top cap (3).
2. Lift the drum (3) and top cap (4) together from the base (1).
3. Bolt the base (1) to flat and smooth surface drilled to take four flat head bolts 1/4" (6 mm) dia. on 2.600" (66 mm) bolt circle dia. Use base (1) as a template. Apply only light coat of bedding (sealing) compound to seal the base to the deck.
4. Slide the drum — top cap assembly together over the base (1).
5. Firmly tighten the capscrew (6) in the top cap (3).

TO LUBRICATE & DISASSEMBLE:

Note: It is not necessary to remove the base (1) from the deck to lubricate this winch.

1. Dismantle as step 1 and 2 above.
2. Separate the top cap (3) from drum (2).
3. Remove ratchet pawls (7) and springs (8) from top cap (3) and base (1).
4. Clean all parts in petroleum solvent. Replace any parts showing damage or excessive wear. During the assembly procedure, the inside of drum (2) should be liberally greased with Barlube grease. The pawls should be lubricated with machine oil only — NEVER grease the pawls and springs.
5. To assemble — reverse dismantling procedure and steps 4, 5 under Mounting Instructions.

SELF ROPE HOLDING — TRIMMING:

A feature of this winch is its unique tailing and self rope holding ability under load. The winch may be used by one person only. To operate: utilize the full height of the drum barrel, using enough turns of rope until it jams underside of top flange of the drum (see fig. 1). As winding progresses, free the tail end of rope from underside of top flange. Do not allow the tail end to advance further than one turn.

TOOL REQUIRED: 3/16" Allen key.

LUBRICANT: Non detergent Machine Oil (SAE 30); Barient Barlube.

INSPECTION & LUBRICATION:

Quarterly lubrication is recommended. Inspect more frequently in a racing season. Monthly cleaning and lubrication of the aluminium drum winches is advisable.

Item	Qty.	Part No.	Description
1	1	15-303	Winch Base
2	1	8-404A	Drum Assembly, Aluminium
Alt.	1	8-404B	Drum Assembly, Bronze
Alt.	1	8-404C	Drum Assembly, Chrome
3	1	8-505C	Top Cap
4	1	O1-584	Pawl Retaining Washer
5	1	O1-502	Retaining Washer
6	1	O1-205	Cap Screw, 1/4-20 UNC x 5/8"
7	4	O1-400	Ratchet Pawl
8	4	O1-300	Torsion Spring

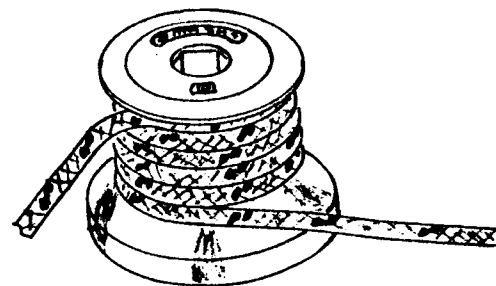


Fig. 1.