

Sailing in Grand Traverse Bay, Charlevoix, and Beaver Island – Summer 2021

More trips are documented at <https://drive.google.com/file/d/1yf9rpXCMjBzrMnfyBDakTzFkOfKu5sjW/view?usp=sharing>

Last fall, Corrie and I chartered a Jeanneau 379 and enjoyed sailing to the towns around Grand Traverse Bay. That was the first time we chartered with just the two of us and we had lively weather and got a lot of docking practice. At the end of that trip, we got to tour other boats from [Great Lakes Sailing Company \(GLSC\)](#). More on that trip, including a lot of resources regarding planning a trip in this area, are documented at the link below: https://drive.google.com/file/d/1-XPDLxAJcuzvKa_3MJ7rwJ9JBhtzb8L_/view?usp=sharing

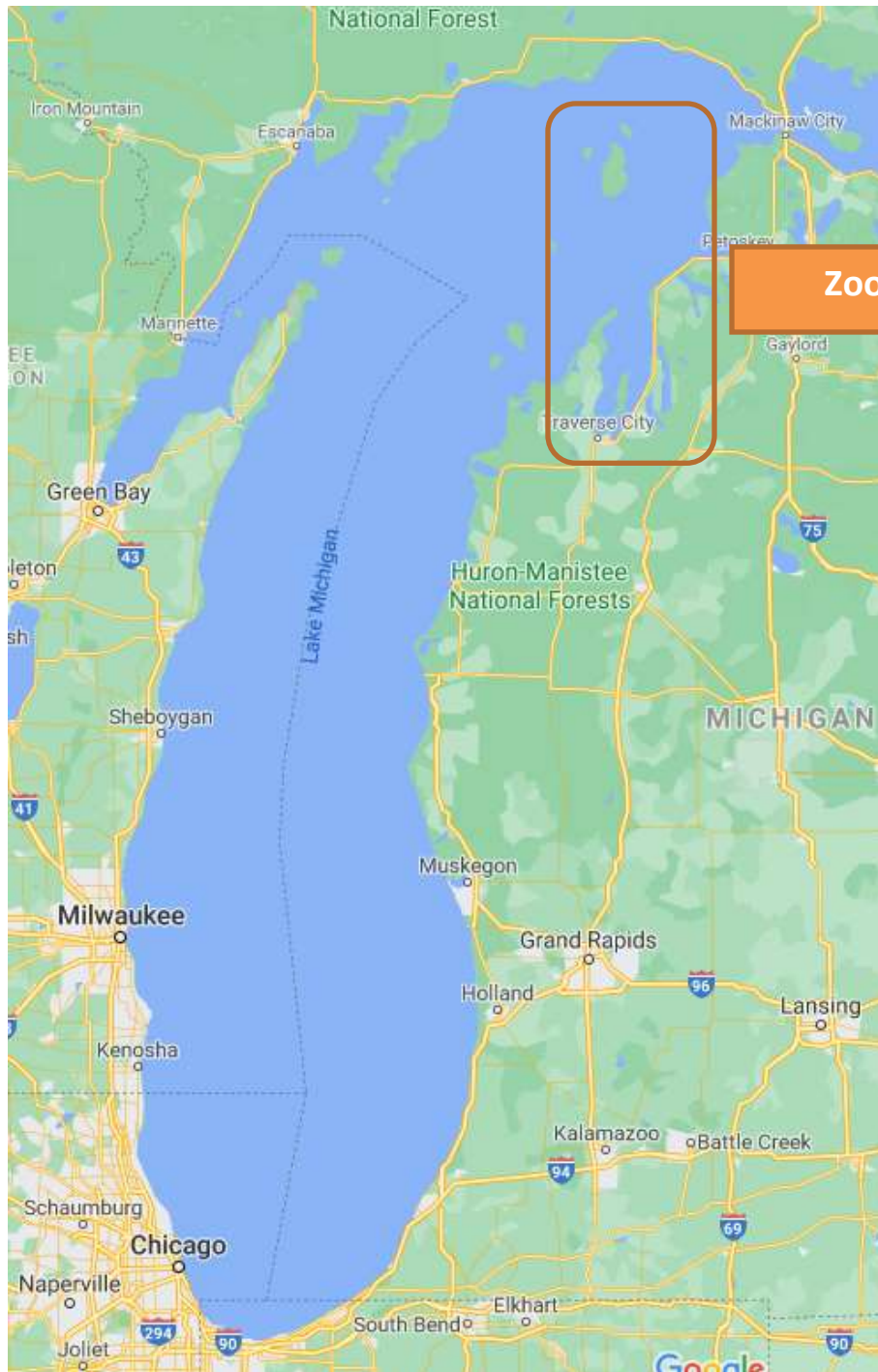
We enjoyed the trip so much that we immediately booked the trip for this year and picked sailing vessel [Themiscyra](#), which is a Catalina 385. We wanted to try out the island berth setup which turned out to be convenient. We knew we wanted to come back with friends and explore outside the bay as well. This year our friends Jed and Teresa joined us. With 4 capable sailors onboard it allowed us to sail further. Corrie and I have also gained experience since the last trip, particularly from some intense sailing classes and charter in San Francisco Bay. The winds for this trip were mostly light with the exception of the sail south from Beaver Island to Northport. It was an adventure for us to sail to Beaver Island, halfway across Lake Michigan and we had fun exploring the island. It turns out that there is a lot of history there, which they do a good job of presenting via historical markers that you can read on a self guided walking tour. You can find out more on the [Beaver Island page on Wikipedia](#) or the site from their chamber of commerce (beaverisland.org) which tells more about “America’s Emerald Isle.”

Below here is a brief log of the trip, followed by snapshots of our tracks from Navionics as well as some photo highlights.

Date	Wind Direction	Wind Speed	Wave Height	Dept Time	Arriv Time	Nautical Miles	Weather	Location	Notes
6/27	N	3-7	1-3	0700	1530	30.9	First part of the day was overcast with some light rain and then skies cleared.	Centerpoint Marina in Traverse City to Northport	Sailed about halfway and then had to motor the remainder since the winds died. Had some swell in the later part of the day. Jesse backed into a slip for the first time as captain.
6/28	W	3-12	1	0715	1520	37.6	Sunny, warm, and mostly clear	Northport to Charlevoix	Calm seas and minimal wind in the morning so we motored to Charlevoix. For the first time, went through the channel and through the raised drawbridge with a number of other boats. Anchored for lunch in Lake Charlevoix, and then sailed halfway down the lake and back. Stayed at the municipal marina in Round Lake. Meander, the Jeanneau 379 that we rented last year was docked next to us and we visited with the couple that chartered that boat this week. Went on a walk / hike up north to North Point Nature Preserve and got to explore some dunes and the long beach along the bay.

6/29		8-12		0720	1130	28.5	Overcast	Charlevoix to north dock at St. James Harbor on Beaver Island	<p>Calm seas and no wind so we motored all the way.</p> <p>The drawbridge which normally opens on the hour and half hour was open for some reason at 0815 as we pulled out from our slip so we made a quick exit so we didn't have to go through the channel at the same time as the ferry, which leaves at 0830.</p> <p>Our boat just barely fit into our slip. The north docks had recently been acquired by the township and they were doing a lot of work on all the facilities. Fortunately, the shore power had just been turned on the morning that we arrived.'</p> <p>Jed and Jesse toured the free nautical museum which includes an old fishing vessel that you can go in. The lady on staff was the daughter of one of the ship captains featured in the museum.</p> <p>Learned about boodling from a local sailor who gave us a ride to the Circle M.</p>
6/30									<p>We rented electric bikes from St. James Boat Shop and explored the island. We all went south together to Little Sand Bay which has a beautiful short hike along a creek through different eco systems and ends at a bay on the east side of the island.</p> <p>After that , Jed headed to the lighthouse on the south side of the island. Corrie, Teresa and Jesse went over to Donegal Bay on the west side of the island (from there you can see High Island) and then went on a long hike by Font Lake.</p> <p>Jesse also explored the Nature Preserve on the north eastern side of the island which opens up on a beach where you can see Garden Island.</p>
7/1	N	15-25	6	0705	1535	48.6	Sunny, warm, and windy	Beaver Island to Northport	<p>Steady winds of around 20 knots out of the north pushed us south to Northport. Swells of around 6 feet with occasional larger swells. Went on broad reaches all the way south which led for a lot of motion with the</p>

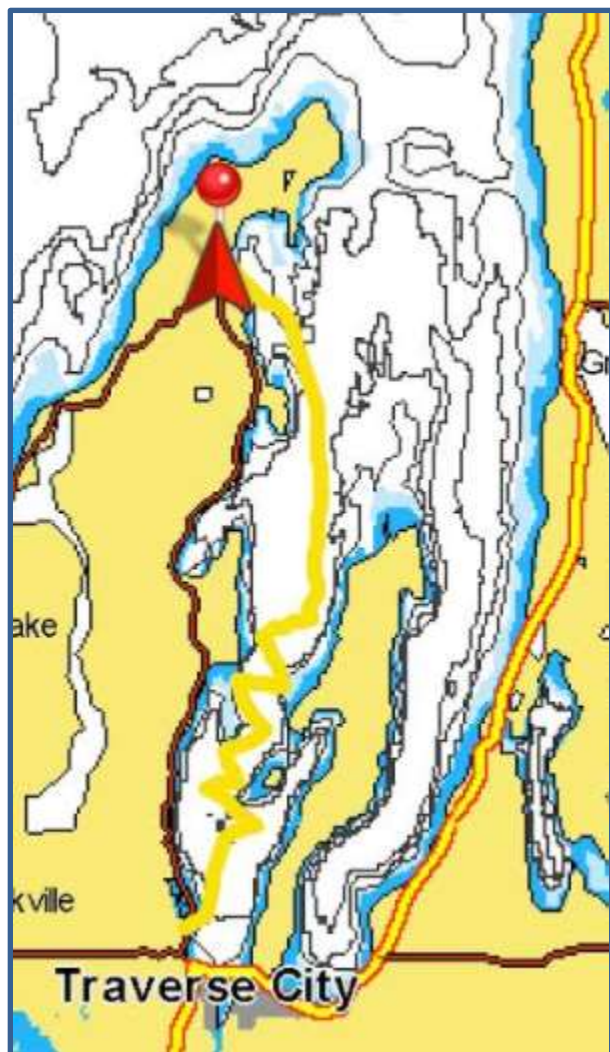
									swells coming over the quarter. Talking with another sailor later, it would have been more comfortable to run directly with the wind on jib alone. This was the most sailing distance in a day for Jesse, Corrie, and Jed.
7/2	N-NW	3-8	0-2	0750	1600	29.7	Sunny	Northport to Suttons Bay to Traverse City	Very low winds to start with. Tried wing on wing downwind for a bit before motoring to Sutton's Bay for lunch and walking around the town. Then sailed most of the way to Traverse City before turning on the motor for the final section.
7/3								Return boat	Jed and Teresa left early and then Jesse and Corrie turned in the boat. We drove up Old Mission peninsula and climbed up the (small) lighthouse at the top of the peninsula. Then we went to Cherry Republic in Glen Arbor and visited family at their cottage nearby before starting the drive home.



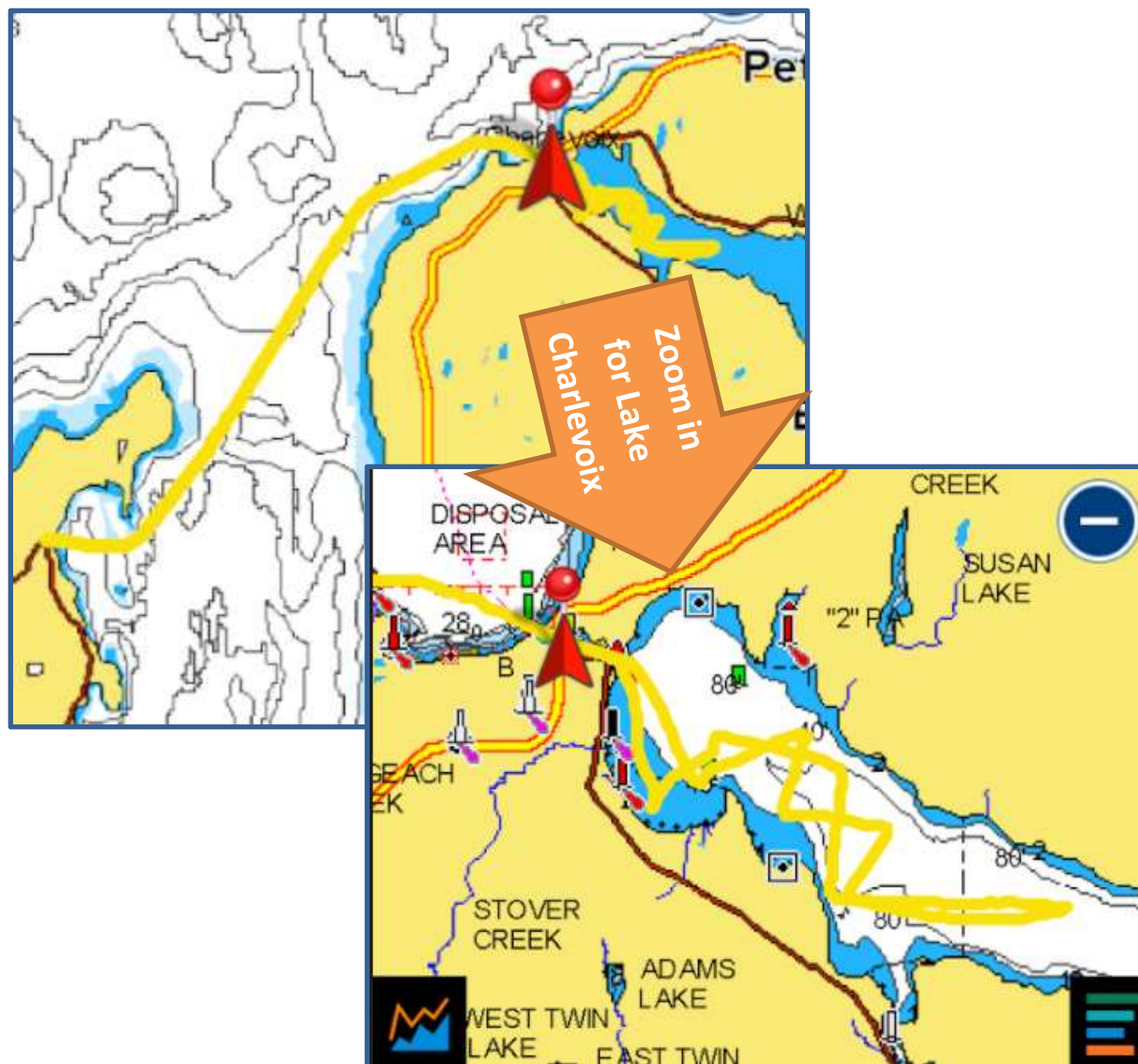
Zoom in



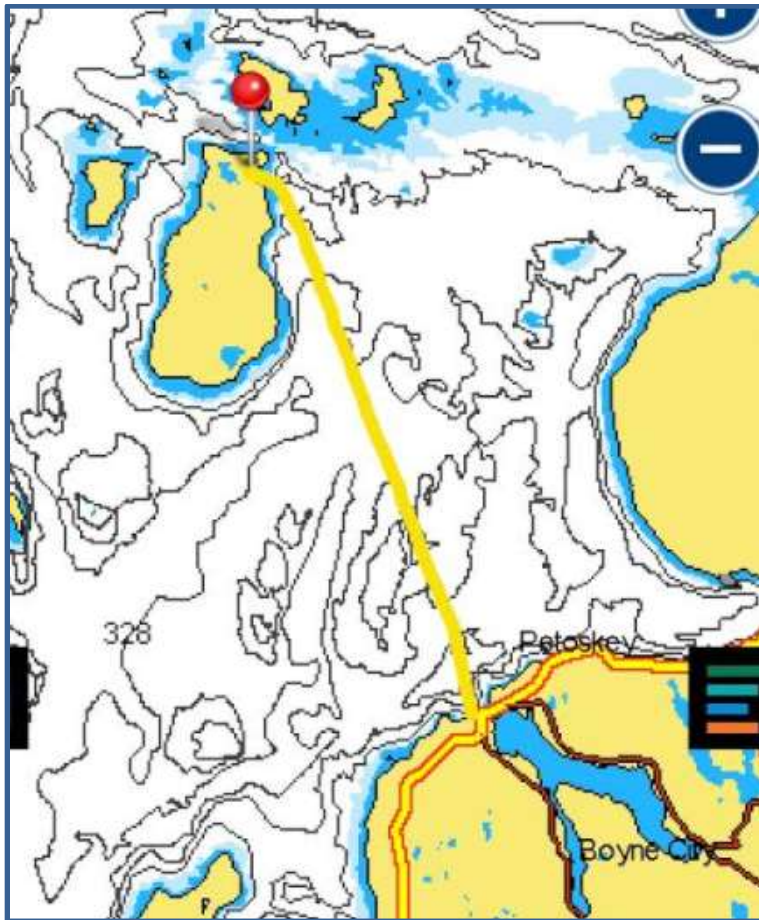
8.5 Hours, 30.9 NM



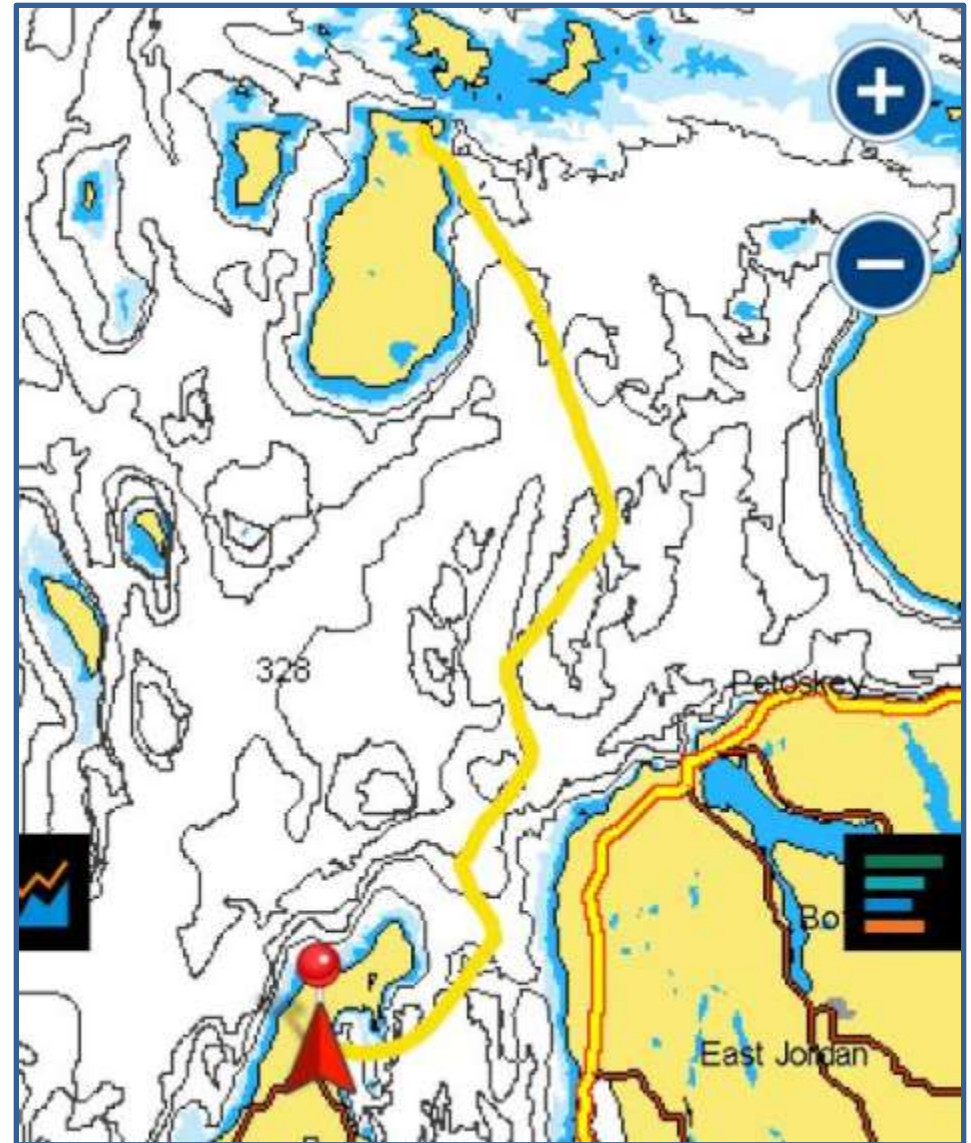
7 Hours, 37.6 NM



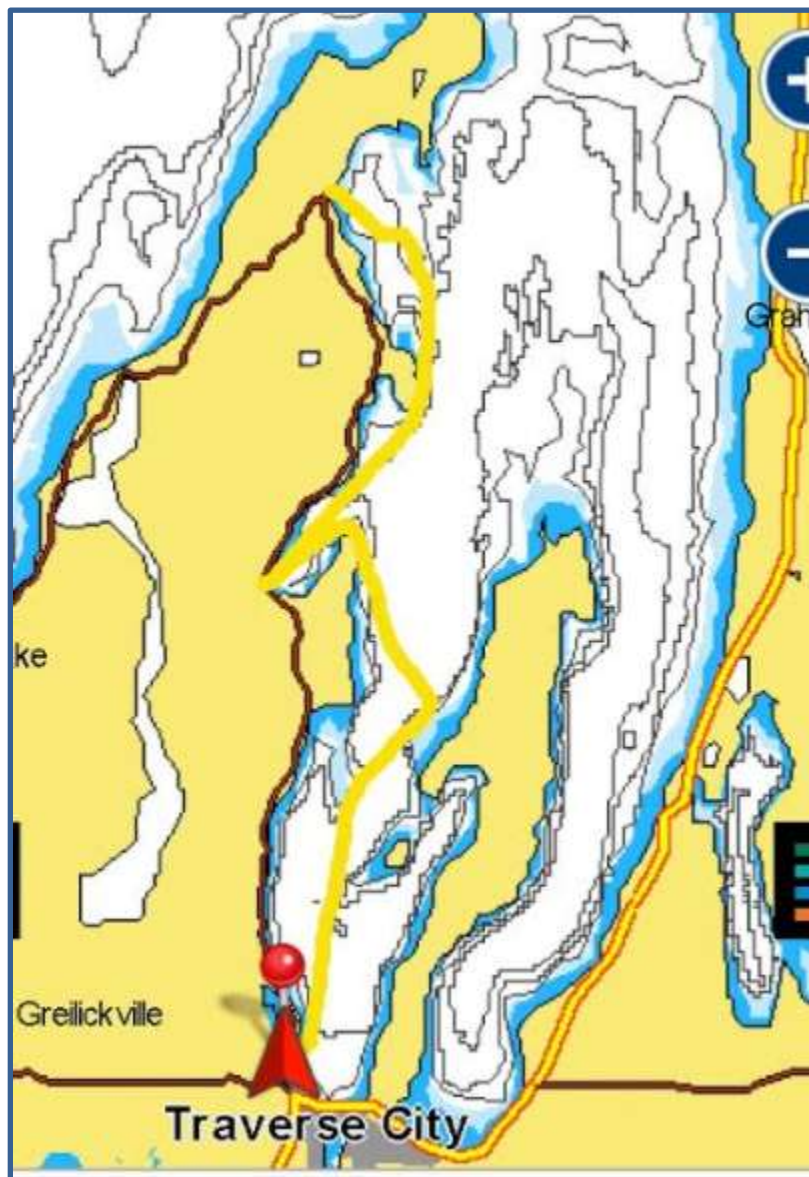
Tuesday, June 29, 2021
4.25 Hours, 28.5 NM



Thursday, July 1, 2021
8.5 Hours, 48.6 NM



Friday, July 2, 2021
8 Hours, 29.7 NM



Themiscyra, Catalina 385 - our boat for the week































Video: going south and downwind from Beaver Island to Northport: <https://youtu.be/AxD7xpN6Bro>

Another video taken from our boat looking at another boat going in the north (upwind) on the same day on the same day as the video above:
<https://youtu.be/cn0-9XOz-J0>